



Facebook

Carburetor rubber bowl JT.1026.A.00-JT.1026.A.01

Product Information

General characteristics

General Definition

The product is used to assist the carburetor in the mechanical parts. In some specific cases, it also keeps the lubricating oil level in the bearing box constant.

Working Principle

It is a compression type product that supplies the medium to the required system through the circulation of compression and relaxation.

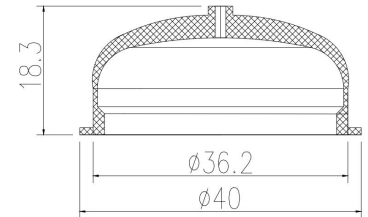
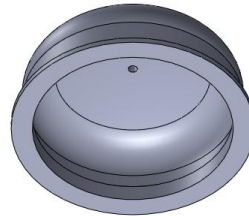
Description of Use

This product is suitable for a variety of machinery and equipment that need to be oiled

Design and Assembly

Feature

JT.1026 series is designed as a bowl-shaped rubber piece



Mounting Instructions

Compress the brim of the product up and down ,please contact us for mounting instructions

Available Product Numbers

Part Number	Material	Color	Availability
JT.1026.A.00	NBR	Custom	Sample & Lot
JT.1026.A.01	EPDM	Custom	Sample & Lot

Contact:

sales-1@valvekingdom.com

website : www.valvekingdom.com

